

Fellowes® Array™

The Most Advanced Networked Air Quality System



Healthy Air is Essential to Healthy Spaces



Every organization wants to provide a healthy and comfortable workspace for their teams, customers, and guests. But without an effective air quality strategy, even the most health and wellness focused minded organizations are putting their people at risk. When organizations prioritize HEPA-grade air purification throughout their spaces, the benefits go far beyond better breathing.



Improves Productivity



Reduces Common Complaints
Such as Odours



Reduces Absenteeism
and Presenteeism



Creates a More Positive,
Health-Focused Environment



Improves Facility Perceptions

State of Indoor Air Quality



While COVID-19 may no longer be top of mind for some organizations, recent surveys and continued research show that the need to improve IAQ is here to stay. The devastating global impact of the latest pandemic permanently altered public perceptions of indoor air quality and how organizations need to change.

Employees are aware of the impact of air quality on their health.

The push for cleaner indoor air in our workplaces has been led by public health researchers, national associations and the White House, which have all recognized the role employers, contractors and consultants can play in designing and improving workplaces for better indoor air quality (IAQ). Fellowes surveyed over 1,000-employees of all ages and found that only 1-in-3 said their air was very clean. However, 73%¹ of people surveyed agreed that the quality of the air they breathe directly impacts their health and well-being.

Employees are demanding more transparency when it comes to IAQ.

According to research conducted by Carbon Lighthouse², over 80% of millennials said they would feel safer returning to the office if they had access to real-time, transparent information on indoor air quality.

The demand for healthy workplaces is increasing.

A recent study³ found that companies appreciated 48% more when compared to the S&P 500 Index over a six-year period when receiving high scores in corporate health and wellness self-assessments. Organizations and their stakeholders are seeking effective solutions to provide optimized air quality without extensive capital investment or disruption of their normal activities.

Source 1: Fellowes International Day of Clean Air Survey

Source 2: (<https://www.carbonlighthouse.com/blog/consumers-to-drive-u-s-economic-recovery-91-say-indoor-air-quality-critical-in-fight-against-covid-19>)

Source 3: Journal of Occupational and Environmental Medicine

Indoor Environmental Quality

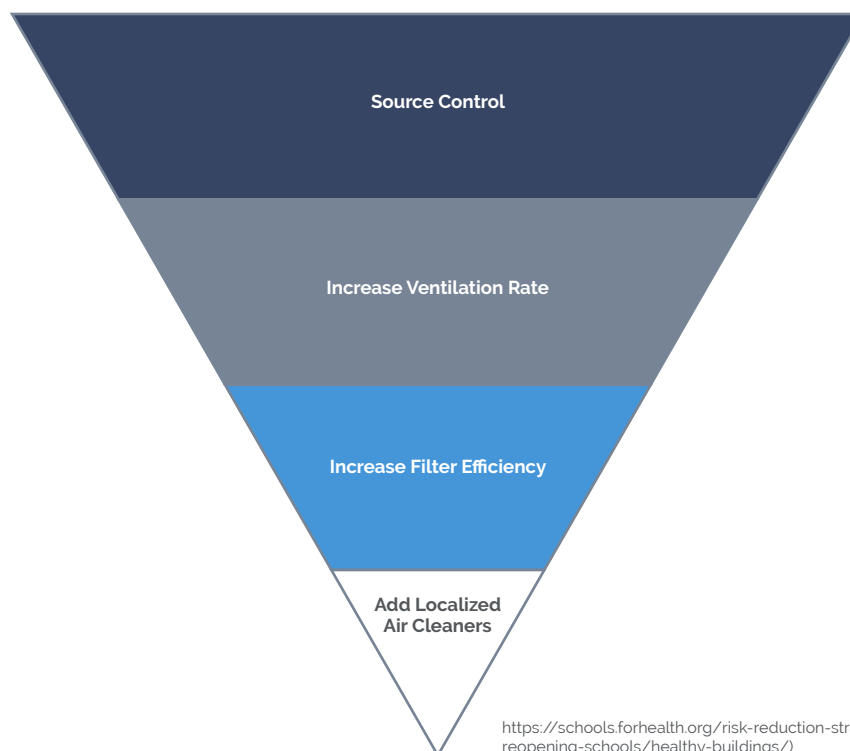
The way spaces are designed to accommodate work, learning, play and life can play a significant role in improving people's overall well-being. Indoor Environmental Quality (IEQ) is impacted by all of the systems that make up a building, which include: the building envelope, thermal comfort (HVAC), air quality, lighting and acoustic systems.

Indoor Air Quality (IAQ) describes the air quality within and around buildings and structures, especially as it relates to the health and comfort of building occupants. Three major reasons for poor indoor air quality are:

- Presence of indoor pollutants
- Poorly designed, maintained, or operated ventilation systems
- Challenges in building design or unintended use

Thermal comfort accounts for 40-60% of a building's energy consumption. Commercial buildings have relied heavily on their HVAC system to distribute clean air inside. In addition, the EPA and Harvard's T.H. Chan School of Public Health have provided guidance that prioritizes increasing ventilation and HVAC filter upgrades as key strategies to improve IAQ. However, emerging evidence indicates that today's HVAC systems, standards, and uses may not be enough to provide the indoor air quality levels expected by businesses and communities today.

Multi-layer Mitigation Plan to Improve Indoor Air Quality



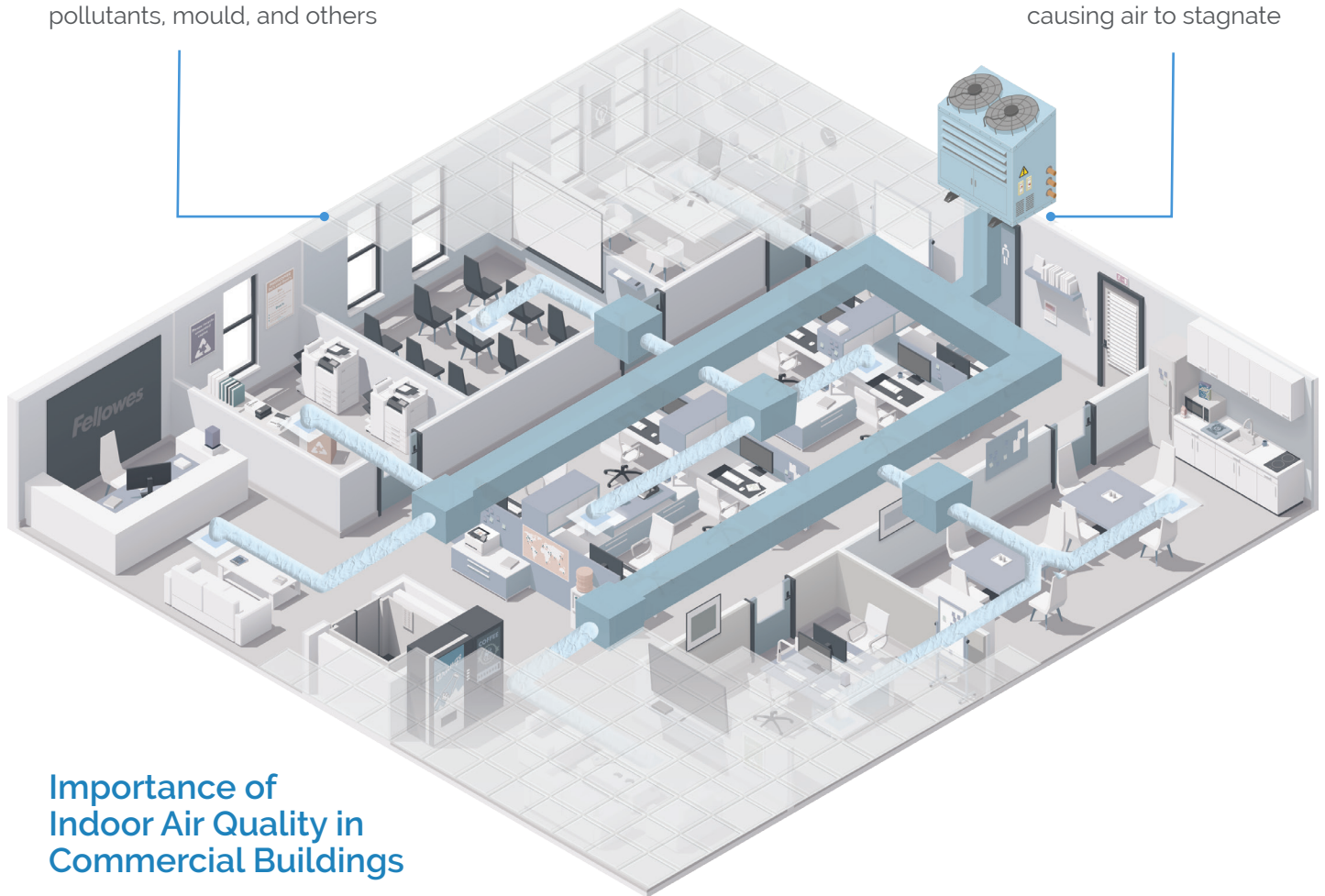
<https://schoolsforhealth.org/risk-reduction-strategies-for-reopening-schools/healthy-buildings/>

The Insight of Air Monitoring

There are over 5.9 million commercial buildings, totaling over 97 billion square feet. In a post-COVID environment, many organizations and property managers are looking to redesign, reconfigure and reimagine their spaces - adding individual huddle rooms to creating larger collaborative spaces. These new spaces may have different ventilation and air quality requirements than what they were originally designed for.

70% more contaminants in indoor air due to people, cleaning supplies, building materials, outdoor pollutants, mould, and others

Most HVAC systems recirculate air to boost energy efficiency. However, this does not always occur evenly, causing air to stagnate



Importance of Indoor Air Quality in Commercial Buildings

While this may seem straightforward, building managers are challenged with trying to balance thermal comfort, increased ventilation and improved IAQ while trying to manage the bottom line.

In January 2021, ASHRAE provided updated COVID-19 guidance that indicated ventilation, filtration, and air cleaners could be combined to deliver "equivalent air changes" to achieve improved IAQ.

It's time to reevaluate the technologies available to solve these challenges.

Fellowes recognizes the need for a new category of IAQ, one that reimagines air purification as more than just hardware upgrades. This new approach to the category needs to offer the flexibility and efficacy of individual air purifiers, the sophistication and ability to work alongside HVAC, and the building-wide awareness of air monitoring technology.



Fellowes Array™

The Most Advanced Networked Air Quality System

Array is a breakthrough solution that improves indoor air quality faster and more efficiently than ever before. Array uses its proprietary technology to combine the benefits of H13 True HEPA filtration, a full suite of indoor air quality sensors and monitoring with real-time data to monitor, track, and improve building-wide air.

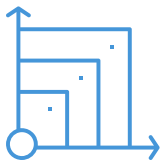
Array is the first system of its kind, where networked air purifiers and commercial HVAC work in complementary harmony throughout your entire space.

Our patented EnviroSmart+™ Technology continuously monitors the environment for changes in occupancy density and conditions of the space and automatically adjusts units to ramp up or down to address a change in contaminants. Array is also powerful enough to deliver an additional 3 to 5 eACH depending on room size. Our thoughtful design pulls contaminants up and out the of the breathing zone while simultaneously pushing clean air out throughout the room to improve ventilation effectiveness, delivering an increase in equivalent room air changes - reducing the stress on your HVAC system and your energy costs.

Fellowes is pioneering a new chapter in indoor air quality management with Array, and more importantly, cleaning indoor air for every breath.



Seamless & Scalable Integration



Traditional air purifiers are often obtrusive and distracting, degrading the experience and enjoyment of shared spaces. Fellowes Array is designed to seamlessly integrate with existing architecture and design aesthetics.

Array's air purifiers, sensors, and monitors securely connect over LTE to form a complete network for optimal air quality in any room, floor and building.

- Scalable to adapt with your building structure, headcount, and purification needs
- LTE-networked units ensure fast, reliable connectivity anywhere

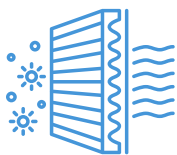
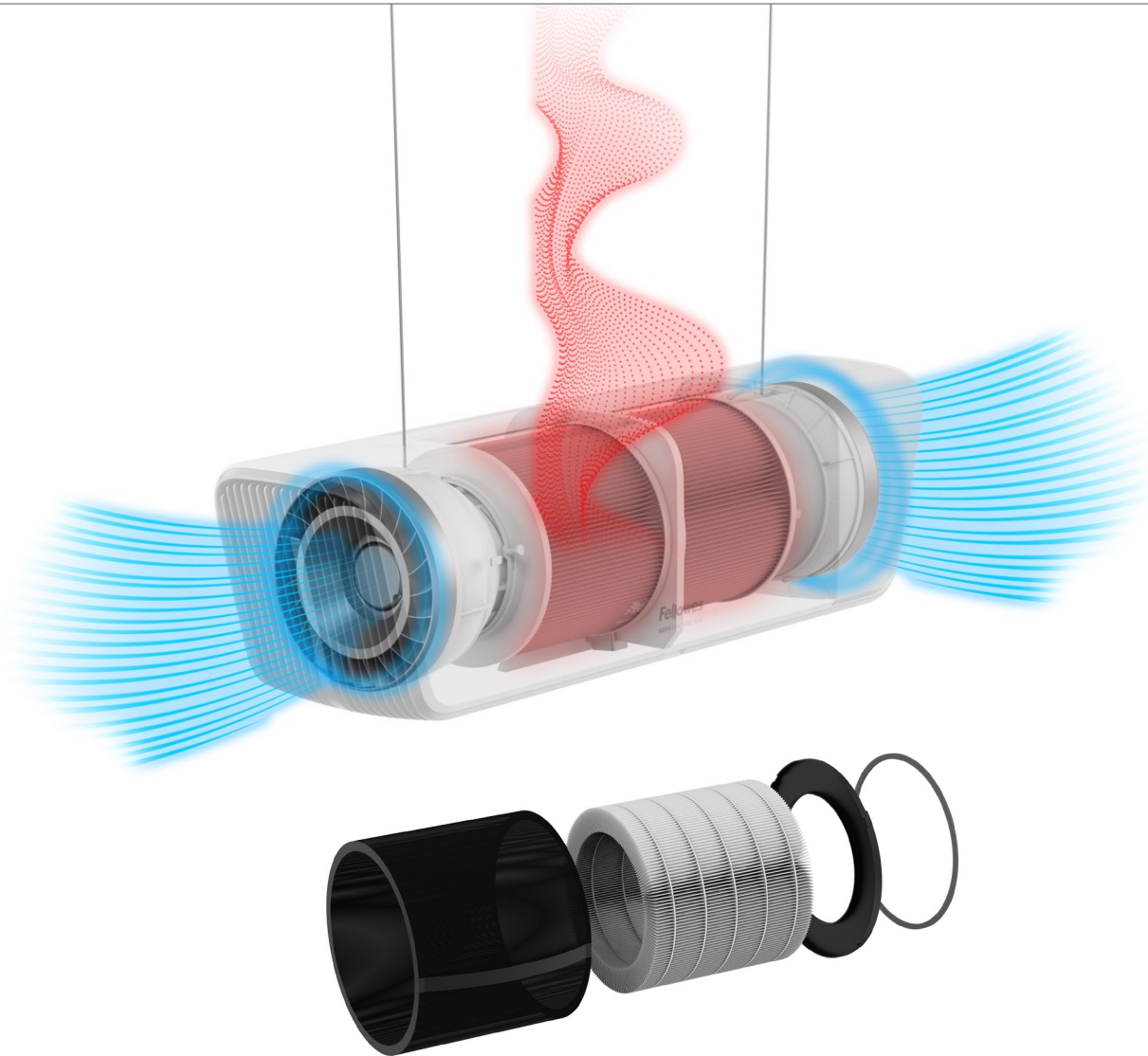
Automatic Sense & React Technology



Advanced suite of EnviroSmart+™ sensors proactively monitor their surroundings and automatically respond to deliver clean indoor air as your needs change. This allows our units to work hard when they need to, and shift into standby mode when possible to conserve energy and reduce operating expenses.

- Sensors continuously share and receive air quality data, providing comprehensive insight to how air is moving, degraded, and ultimately purified
- Our full suite of IAQ, monitoring and comfort sensors include particulate (PM2.5, PM10), VOC/TVOCs, CO2, rH, temperature, indoor air pressure, light, occupancy and sound

Effective & Efficient Filtration



Our 3-in-1 filter is 99.95% effective in capturing particles as small as 0.1 microns including viruses, allergens and germs. The mixed-flow fan design maximizes air flow while delivering quiet operation.

- Designed for demanding, continuous use, Fellowes filters feature a one year filter life
- UVC enabled units kill bacteria, viruses, VOCs, and other airborne contaminants

Monitoring & Real-Time Data



Smart air purification that connects back to you. Array's intuitive monitoring and display technologies tell you the exact air quality status of your space in real-time.

- Viewpoint displays concurrent data, notifications, trends and information that enables optimal indoor Air Quality Management. Available on any device from anywhere
- Building managers can schedule maintenance needs, track air quality over time, and identify correlations with energy usage*
- Lookout display shows precise air quality status and filtration progress via a wall-mounted display or desktop display

*Available to Viewpoint Plus subscribers

Built For Your Building

The complete line of Fellowes Array products work together to provide an intuitive, coordinated response to your air quality circumstances – all designed with a clean, minimalist aesthetic.

Thanks to a range of configurations and installation options, Array is designed to complement and enhance any space.



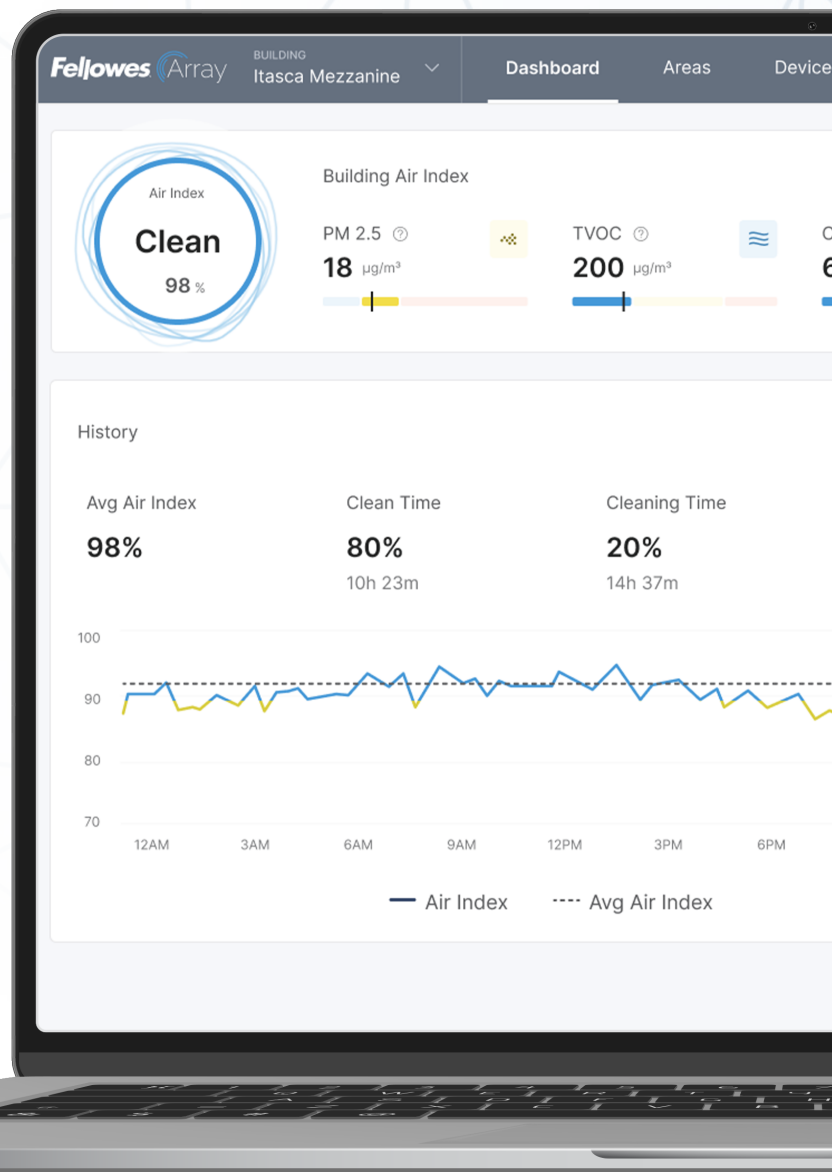
Array™ Recess
High Performance, Low Profile

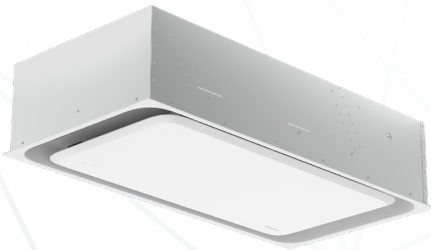


Array™ Ceiling
Clean Air from Above



Array™ Lookout
The Invisible, Now Visible





Array™ Recess UVC
Light-Powered Disinfection



Array™ Wall
Wall to Wall Protection



Array™ Stand
Designed for Maximum Flexibility



Array™ Signal
Monitor Any Space

Devices Maintenance **J** John D. Fellowes

CO₂ 600 ppm

Need Attention [See more →](#)

5 Replace Now Less than 10%	12 Replace Soon 10% - 20%	3 Inactive No network signal
--	--	---

Areas Devices

2 Cleaning Less than 70%	4 Cleaning 89% - 70%	40 Clean More than 90%
---------------------------------------	-----------------------------------	-------------------------------------

70 Conference Room 232 B000 ⚠

70 Dan's Office C006

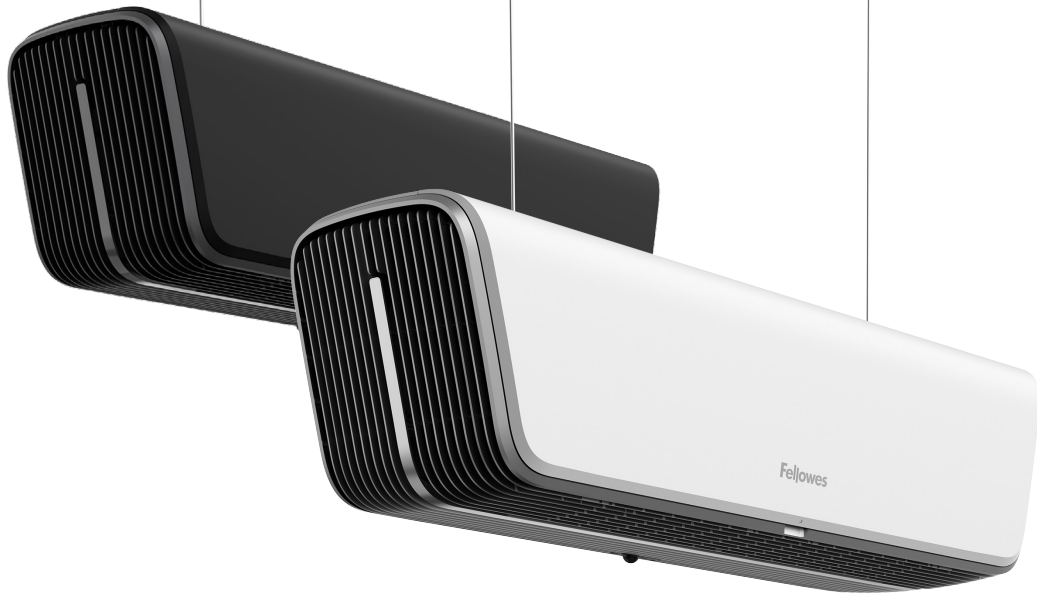
80 Conference room B005 ⚠

[See All Areas →](#)

Occupancy **18%** 8h 23m

9PM 12AM

Fellowes Array™ Ceiling

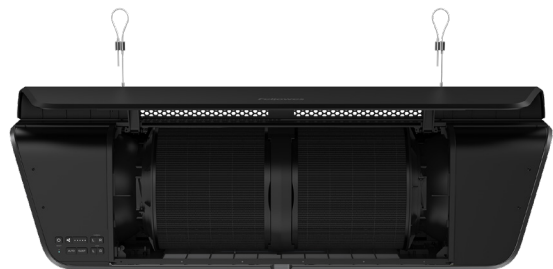


AC2

Clean Air from Above

Designed to integrate into open ceiling spaces

- Fellowes 3-in-1 filter (pre-filter, carbon and H13 True HEPA filtration) is 99.95% effective in capturing molecules as small as 0.1 microns including viruses, allergens and germs and is designed to last for one full year
- Array Ceiling's energy efficient design includes our unique mixed flow fan, designed to maximize air flow while delivering quiet operation
- Suspends from ceilings as high as 20'
- EnviroSmart+™ Technology includes a full suite of comfort and control sensors to continuously monitor contaminants, room occupancy and noise levels and proactively respond to changes. Our integrated suite of indoor air quality (IAQ) sensors includes particulates (PM10, PM2.5), occupancy, temperature, humidity (rH), carbon dioxide (CO2), pressure, and TVOCs
- Access to the Array Viewpoint cloud-based dashboard is included
- Designed and engineered for long term use backed with 5-year warranty



10 Foot Ceilings

3 ACH
1,430
Square Feet

5 ACH
858
Square Feet

12 Foot Ceilings

3 ACH
1,191
Square Feet

5 ACH
715
Square Feet



Fellowes

High Performance, Low Profile

Inconspicuous air filtration that beautifully integrates with the majority of standard grid ceiling systems.

- Fellowes 3-in-1 filter (prefilter, carbon and H13 True HEPA filtration) is 99.95% effective in capturing molecules as small as 0.1 microns including viruses, allergens and germs and is designed to last for one full year
- Array Recess AR2 includes dual filters
- Array Recess units' energy efficient design includes our unique mixed-flow fan, designed to maximize air flow while delivering quiet operation
- EnviroSmart+™ Technology includes a full suite of comfort and control sensors to continuously monitor contaminants, room occupancy and noise levels to proactively respond to changes. Our integrated suite of indoor air quality (IAQ) sensors includes particulates (PM10, PM2.5), occupancy, temperature, humidity (rH), carbon dioxide (CO2), pressure, and TVOCs
- Access to the Array Viewpoint cloud-based dashboard is included
- All units in the Array system connect by LTE
- Designed and engineered for long term use backed with 5-year warranty



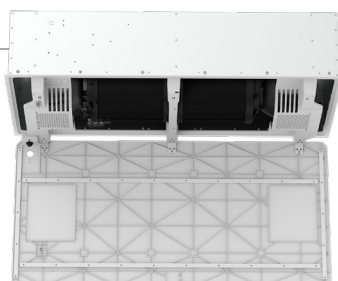
Recess Single AR1



Recess Double AR2

8 Foot Ceilings

<p>3 ACH</p> <p>750</p> <p>Square Feet</p>	<p>5 ACH</p> <p>450</p> <p>Square Feet</p>	<p>3 ACH</p> <p>1,500</p> <p>Square Feet</p>	<p>5 ACH</p> <p>900</p> <p>Square Feet</p>
Recess Single		Recess Double	



H13 True HEPA filtration is 99.95% effective in capturing molecules as small as 0.1 microns including allergens, viruses, and germs.



Wall to Wall Protection

Array™ Wall can be installed on a range of wall materials with minimal installation requirements.

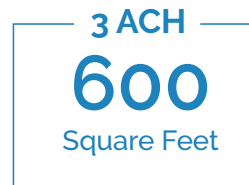
- Clean, subtle design includes integrated Lookout display providing Air Quality status to users of an area
- Fellowes 3-stage filtration (pre-filter, carbon, and H13 True HEPA) Effectively removes at least 99.95% of particles as small as 0.1 microns, including allergens, such as pollen, dust, pet dander, and smoke
- Array AS2 and AW2 include dual hybrid filters
- Equipped with our EnviroSmart+™ Technology which includes a full suite of comfort and control sensors to continuously monitor contaminants, room occupancy and noise levels to proactively respond to changes. Our integrated suite of indoor air quality (IAQ) sensors includes particulates (PM10, PM2.5), occupancy, temperature, humidity (rH), carbon dioxide (CO2), pressure, and TVOCs
- Access to the Array Viewpoint cloud-based dashboard is included
- All units in the Array system connect through LTE
- Designed and engineered for long term use backed with 5-year warranty



AW2

AW1

8 Foot Ceilings



Wall/Stand 1

8 Foot Ceilings



Wall/Stand 2



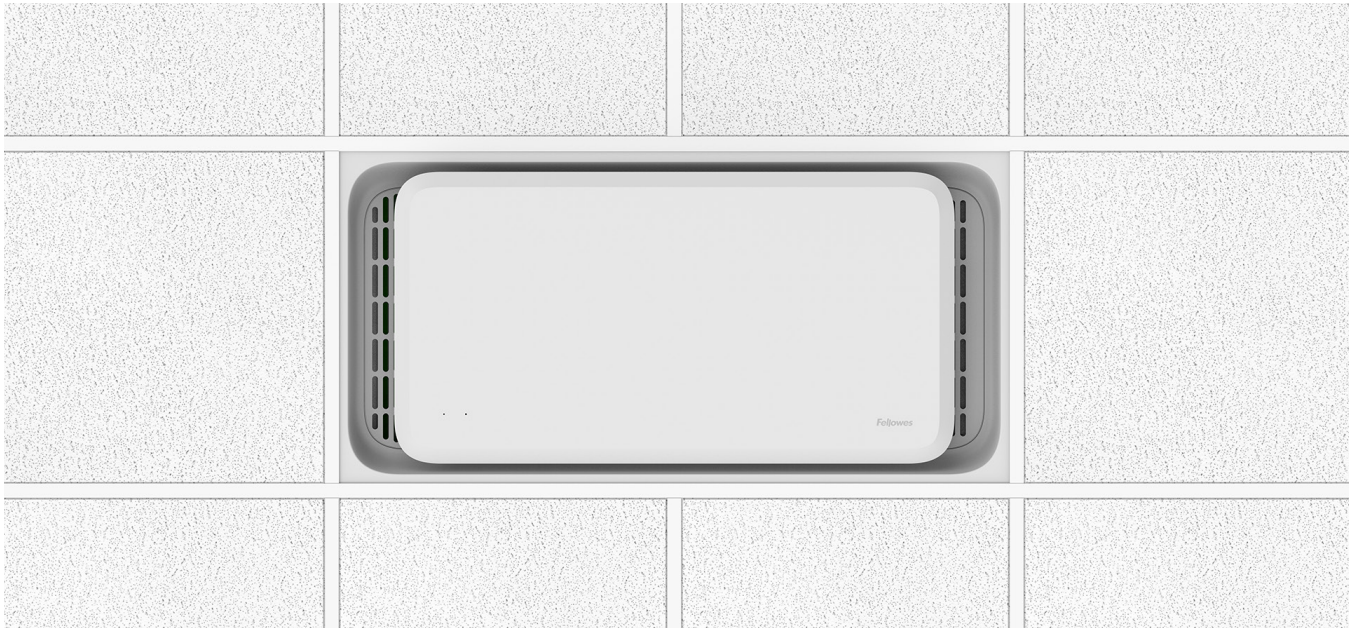
AS2

AS1

Designed for Maximum Flexibility

Array™ Stand can be rapidly moved and repositioned wherever it is needed next, no installation required.

Fellowes Array™ Recess UVC



Light-Powered Disinfection

Sophisticated flush-mount design seamlessly installs into double ceiling tile.

- Clean, subtle design offers integrated and seamless suspended installation in standard grid ceiling and is designed for occupied spaces. The self-contained UV-C chamber is hidden in the ceiling plenum
- Our proprietary and patent-pending ultra-high reflectivity chamber utilizes a shielded all metal chamber, designed to last for the life of the unit
- Array Recess UVC delivers a high first-pass kill rate and is specially designed to provide dedicated and continuous 24x7 ultraviolet protection against airborne bacteria, viruses, and mould, all while safely hidden overhead and out of sight.
- Easy maintenance and operation
- The AR1 UVC unit includes a pre-filter that keeps the UV chamber free of dust and hair and operates as efficiently as possible
- 9,000-hour bulb only needs changing one per year
- Bottom panel access for easy bulb and filter replacement



AR1 UVC

8 Foot Ceilings

3 ACH
300
Square Feet

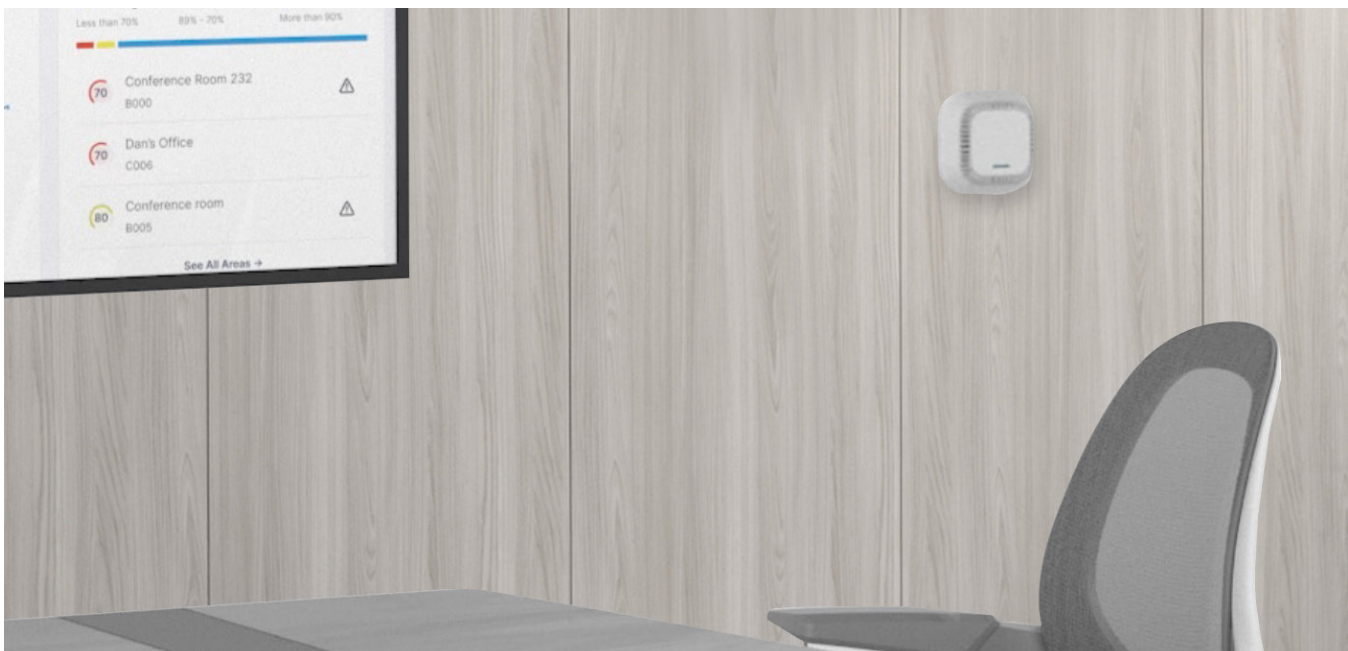
5 ACH
180
Square Feet

- Access to the Array Viewpoint cloud-based dashboard is included
- All units in the Array system connect through LTE
- Designed and engineered for long term use backed with 5-year warranty

Monitor Any Space

Signal provides remote monitoring for areas without a dedicated air purifier. Place in smaller offices, transitional areas, or anywhere else without proper ventilation or air monitoring.

- Our Signal monitoring device provides additional IAQ monitoring as part of your overall Array remediation network of air purifiers, or it can operate without connected air purifiers as a standalone IAQ monitor
- Our integrated suite of indoor air quality (IAQ) sensors includes particulates (PM10, PM2.5), temperature, humidity (rH), carbon dioxide (CO2), pressure, and TVOCs
- Signal connects through LTE to the Array Viewpoint cloud-based dashboard is included. Viewpoint gives users comprehensive visibility into their building's air quality
- Signal can operate without connected Array air purifiers in a standalone monitoring implementation
- Sleek design to integrate into your building, offered in both wall mount and desktop options
- Designed and engineered for long term use backed with 5-year warranty





The Invisible, Now Visible

Lookout's wall-mounted display shows precise air quality status and filtration progress. Now, anyone can have confidence that their office, room, or workspace is safe.

- With Lookout, you can control Array units assigned to a designated area
- Includes a Quiet button that puts all units in the same room into Quiet Mode
- Lookout offers a sleek design to integrate into your Array units, offered in both wall mount and desktop options
- Lookout connects through LTE to the Array Viewpoint cloud-based dashboard is included. Viewpoint gives users comprehensive visibility into their building's air quality
- Designed and engineered for long term use backed with 5-year warranty



Data-Informed Decisions

Designed with facilities and operations managers in mind, Viewpoint provides comprehensive air quality data for all of your connected spaces from an easy-to-use dashboard, available on any device.

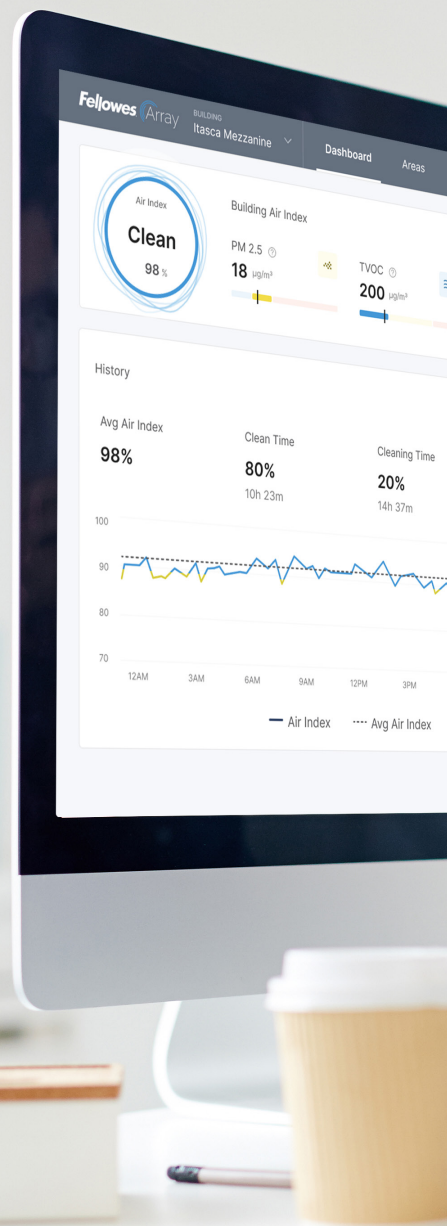
Track trends, monitor energy usage, and evolve your air quality strategy – all from one place.

Features Include:

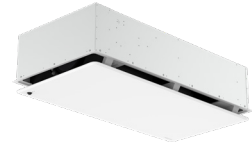
- Sensor sharing between units in an area
- Remote unit controls
- Current RESET Air Index
- Device status and filter change notifications
- Multi-level account management

Viewpoint Plus subscription services include:

- Timers and scheduling for any unit in your system
- Enhanced sensor sharing and unit controls
- Current and historical data to analyze trends and identify IAQ concerns
- Data export capabilities
- Unit maintenance notifications and advanced troubleshooting
- Real-time filter life measurement and replace history
- Community dashboard
- Future BMS integration







Specs*		Array Ceiling AC2		Array Recess AR1			Array Recess AR2		
Area Coverage (SQFT)		Ceiling Height (ft)		Ceiling Height (ft)			Ceiling Height (ft)		
		10	12	8	10	12	8	10	12
eACH	1	4,290	3,575	2,250	1,800	1,500	4,500	3,600	3,000
	3	1,430	1,191	750	600	500	1,500	1,200	1,000
	5	858	715	450	360	300	900	720	600
Product code		W: 5889201, B: 5889202		5888601			5888901		
Fan Speeds (CFM)		136, 186, 333, 504, 715		60, 80, 134, 201, 300			114, 153, 264, 391, 600		
Sound pressure levels, each fan speed (dB)		39, 41, 43, 59, 61		39, 40, 46, 49, 60			39, 39, 44, 51, 60		
Power Requirements (V/Hz/A)		AC120V/60Hz/1.2A		AC120V/60Hz/0.8A			AC120V/60Hz/1.5A		
Power Consumption (Watts)		11, 13, 24, 26, 120		6, 7, 12, 24, 64			9, 11, 22, 45, 120		
EnviroSmart+™ Technology (particulates (PM10, PM2.5), occupancy, temperature, humidity (rH), carbon dioxide (CO2), pressure, and TVOCs)		✓		✓			✓		
IoT Connectivity		LTE		LTE			LTE		
Warranty		5		5			5		
Product Dimensions (L x W x H) (in)		49 x 12.7 x 14.3		23.4 x 23.4 x 12.4			47.3 x 23.6 x 12.4		
Weight (lbs)		47		40.3			76.1		
Electrical Connection		Plug		Hardwire			Hardwire		
Energy Star		✓		✓			✓		
AHAM Verifide		—		✓			✓		
UL507		✓		✓			✓		
CARB		✓		✓			✓		
FCC		✓		✓			✓		
EN1822M		✓		✓			✓		
H1N1		✓		✓			✓		
Rhinovirus		✓		✓			✓		
SARS-CoV-2		✓		✓			✓		



Filter Type	3-in-1 360° (Pre-Filter, Carbon, H13 True HEPA)	3-in-1 360° (Pre-Filter, Carbon, H13 True HEPA)	3-in-1 360° (Pre-Filter, Carbon, H13 True HEPA)
Filter Code	5890102	5890101	5890102
Filter Rating	H13 True HEPA	H13 True HEPA	H13 True HEPA
Filter Efficiency	99.95% @ 0.1 microns	99.95% @ 0.1 microns	99.95% @ 0.1 microns
Antimicrobial Coating	✓	✓	✓
Estimated Filter Life	1 Year	1 Year	1 Year

* Subject to final compliance certificate



Specs*		Array Recess AR1 UVC			Array Wall AW1 & AS1			Array Wall AW2 & AS2		
Area Coverage (SQFT)		Ceiling Height (ft)			Ceiling Height (ft)			Ceiling Height (ft)		
		8	10	12	8	10	12	8	10	12
eACH	1	900	720	600	1,800	1,440	1,200	3,000	2,440	2,000
	3	300	240	200	600	480	400	1,000	800	666
	5	180	144	120	360	288	240	600	480	400
Product code		5889501			5884801 (AW1), 5884201 (AS1)			5885101 (AW2), 5884501 (AS2)		
Fan Speeds (CFM)		120			68, 90, 110, 140, 240			120, 150, 200, 260, 400		
Sound pressure levels, each fan speed (dB)		48			39, 42, 46, 51, 64			41, 43, 48, 54, 64		
Power Requirements (V/Hz/A)		AC120V/60Hz/0.6A			AC120V/60Hz/0.9A			AC120V/60Hz/1.5A		
Power Consumption (Watts)		70			6, 9, 13, 24, 96			10, 14, 23, 41, 152		
EnviroSmart+™ Technology (particulates (PM10, PM2.5), occupancy, temperature, humidity (rH), carbon dioxide (CO2), pressure, and TVOCs)		—			✓			✓		
IoT Connectivity		LTE			LTE			LTE		
Warranty		5			5			5		
Product Dimensions (L x W x H) (in)		47.2 x 23.3 x 11			20.9 x 9.7 x 19.6 (AW1) 20.9 x 10.2 x 22.8 (AS1)			34.7 x 9.4 x 19.7 (AW2) 34.7 x 10.6 x 22.8 (AS2)		
Weight (lbs)		62.6			20 (AW1), 25 (AS1)			35 (AW2), 40 (AS2)		
Electrical Connection		Hardwire			Hardwire (AW1), Plug (AS1)			Hardwire (AW2), Plug (AS2)		
Energy Star		—			✓			✓		
AHAM Verifide		—			✓			✓		
UL507		✓			✓			✓		
CARB		✓			✓			✓		
FCC		—			✓			✓		
EN1822M		—			✓			✓		
H1N1		✓			✓			✓		
Rhinovirus		✓			✓			✓		
SARS-CoV-2		—			✓			✓		



Filter Type**	UVC Bulb	Hybrid Filter (Carbon, H13 True HEPA)	Hybrid Filter (Carbon, H13 True HEPA)
Filter Code	100016527	9436902	9436902
Filter Rating	—	H13 True HEPA	H13 True HEPA
Filter Efficiency	98.5% targeted first pass kill rate	99.95% @ 0.1 microns	99.95% @ 0.1 microns
Antimicrobial Coating	—	✓	✓
Estimated Filter Life	1 Year	1 Year	1 Year

* Subject to final compliance certificate ** Includes Pre-Filter



To learn more about , visit
[New.Fellowes.com/Array](https://www.fellowes.com/Array)

Family-Owned and Family-Led by Four Generations

Our Company is exactly that — We're a family-owned and family-led organization focused on making the world we live in a better place.



Over 105 years ago, Harry Fellowes began presenting his original Bankers Box to Chicago area bankers which addressed a growing problem: disorganized paper records. Today, Fellowes Brands is a global leader in a broad range of innovative solutions which help professionals be their best and feel their best.

Fellowes GIVE is a purpose-led initiative that Fellowes invests in, allowing us to partner with organizations to make the world a better place.



How we shape the world of work today has a profound impact on the world of tomorrow. By building sustainability and stewardship into every level of our organization, we can protect the WorkLife potential of our children and grandchildren.

Earth
by Fellowes

