



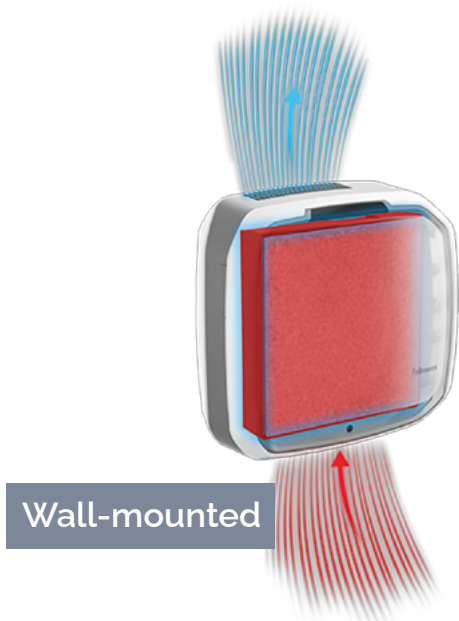
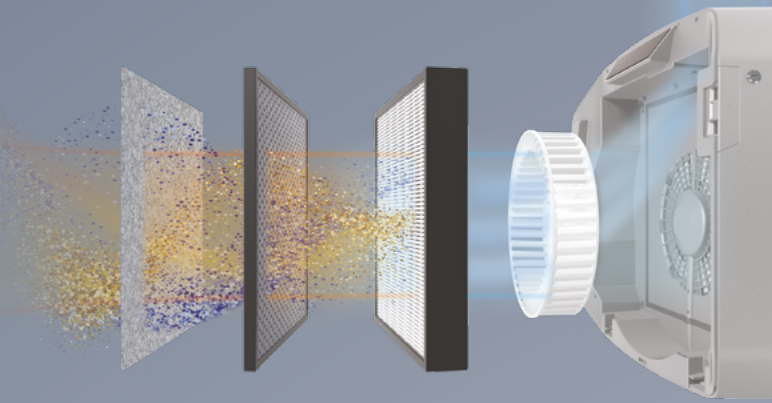
INTELLIGENT PROFESSIONAL AIR PURIFIERS

Product guide: Selection and recommendations

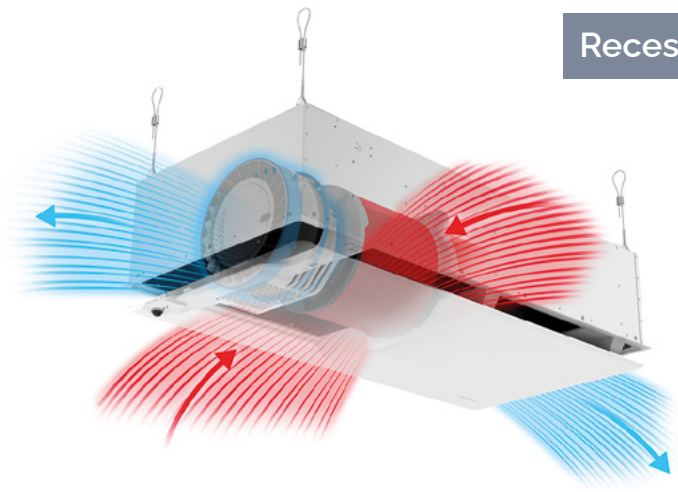
Fellowes
AIR QUALITY MANAGEMENT

Operating principle

Each air purifier draws air from the targeted area, filters out particles and pollutants using an advanced purification system, then returns an equivalent volume of purified air to the same area, improving air quality. Equipped with a sensor, it adapts its airflow according to the level of pollution detected, and automatically switches off when not required.



Wall-mounted



Recessed

Filter types:

Estimated filter life: 12 months.

An indicator enables monitoring of filter wear according to use.



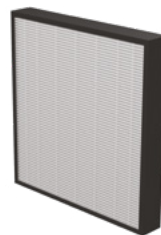
Rectangular hybrid filter for wall-mounted units

Hybrid filter combines HEPA filter with an activated carbon filter to capture both ultra-fine particles and VOCs.



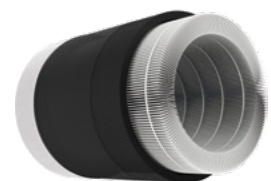
100% Activated carbon filter

The 100% activated carbon filter exclusively treats odours and VOCs, including formaldehyde, benzene and ozone, as well as others.



100% H13 HEPA filter

The 100% H13 HEPA filter captures 99.95% of airborne particles >0.1 micron, including PM, pollen, viruses and bacteria.



Hybrid filter for ceiling and recessed units

The Fellowes 3-in-1 filter (pre-filter, activated carbon filter and H13 HEPA filter) is 99.95% efficient against molecules as small as 0.1 micron, including viruses, allergens and germs, and has a one-year lifespan.

A solution for every space

Depending on the type of space to be treated, a sizing analysis must be carried out in order to define the most suitable configuration.

Each unit is equipped with an air quality sensor (TVOC, PM2.5, CO₂)

Array units transmit data live via the ViewPoint interface

Each unit operates completely autonomously, adapting its airflow according to the air pollution effectively detected in its operating area. There are 2 operating modes: Automatic and Silent. For medium- to high-density areas, we recommend using the silent mode by default. For all other settings, we recommend automatic mode.

Low density occupancy >10m²/occupant.

→ 3 Volumes/hour.

For example: Washrooms, individual office, hotel room, archive and storage facilities



Medium density occupancy 5 to 10 m² / occupant.

→ 4 Volumes/hour.

For example: Shared offices, cafeteria and common areas, lobbies.



High density occupancy <5m² / occupant.

→ 5 Volumes/hour.

For example: Movie theaters, fitness centres, meeting rooms, waiting rooms, nightclubs, stores, etc.



The treated space is considered to be correctly ventilated, in accordance with the air renewal rates specified by regulations.
Do not position a unit less than 3m away from an exhaust opening.

Sizing tables

Low density occupancy >10m²/occupant.

→ 3 Volumes/hour.

Places where occupancy is occasional .



Wall-mounted or floor-standing units

Sizing tables



AM2
Dimensions : 574 x 360 x 104 mm
Weight: 5.8kg
Max. airflow: 144 m³/h



AW1
Dimensions : 576 x 533 x 270 mm
Weight: 9.4kg
Max. airflow: 436 m³/h



AW2
Dimensions : 576 x 885 x 270 mm
Weight: 16kg
Max. airflow: 742 m³/h

Ceiling height (m)	Area coverage (m ²)	10	15	20	25	30	35	40	45	50	60	70	80	90	100
2.5	Minimum recommended airflow in m ³ /h	75	113	150	188	225	263	300	338	375	450	525	600	675	750
2.6		78	117	156	195	234	273	312	351	390	468	546	624	702	780
2.8		84	126	168	210	252	294	336	378	420	504	588	672	756	840
3		90	135	180	225	270	315	360	405	450	540	630	720	810	900
4		120	180	240	300	360	420	480	540	600	720	840	960	1080	1200

Key

AM2

AW1

AW2

Combo*

Recessed & ceiling units

Sizing tables



AR1
Minimum clearance required: 380mm
Dimensions : 595 x 595 x 314 mm
Weight: 18.3kg
Max. airflow: 491 m³/h



AR2
Minimum clearance required: 380mm
Dimensions : 599 x 1202 x 314 mm
Weight: 34.5 kg
Max. airflow: 1021 m³/h



AC2
For ceiling heights of 3m to 6m,
Dimensions : 368 x 1245 x 330 mm
Weight: 21.3kg
Max. airflow: 1204 m³/h

Ceiling height (m)	Area coverage (m ²)	10	15	20	25	30	35	40	45	50	60	70	80	90	100	110	120
2.5	Minimum recommended airflow in m ³ /h	75	113	150	188	225	263	300	338	375	450	525	600	675	750	825	900
2.6		78	117	156	195	234	273	312	351	390	468	546	624	702	780	858	936
2.8		84	126	168	210	252	294	336	378	420	504	588	672	756	840	924	1008
3		90	135	180	225	270	315	360	405	450	540	630	720	810	900	990	1080
4		120	180	240	300	360	420	480	540	600	720	840	960	1080	1200	1320	1440
4m to 6m		180	270	360	450	540	630	720	810	900	1080						

Key

AR1

AR2

AC2

Combo*

*Combination of several units, depending on the airflow required. It is perfectly possible to combine ceiling and wall units.

It is always possible to divide each zone into several separate areas.

Sizing tables

Medium density occupancy 5 to 10 m² / occupant.

→ 4 Volumes/hour.

Places where occupancy is regular, with occupants fairly close to each other



Wall-mounted or floor-standing units

Sizing tables



AM2

Dimensions : 574 x 360 x 104 mm

Weight: 5.8kg

Max. airflow: 144 m³/h



AW1

Dimensions : 576 x 533 x 270 mm

Weight: 9.4kg

Max. airflow: 436 m³/h



AW2

Dimensions : 576 x 885 x 270 mm

Weight: 16kg

Max. airflow: 742 m³/h

Ceiling height (m)	Area coverage (m ²)	10	15	20	25	30	35	40	45	50	60	70	80	90	100
2.5	Minimum recommended airflow in m ³ /h	100	150	200	250	300	350	400	450	500	600	700	800	900	1000
2.6		104	156	208	260	312	364	416	468	520	624	728	832	936	1040
2.8		112	168	224	280	336	392	448	504	560	672	784	896	1008	1120
3		120	180	240	300	360	420	480	540	600	720	840	960	1080	1200
4		160	240	320	400	480	560	640	720	800	960	1120	1280	1440	1600

Key

AM2

AW1

AW2

Combo*

Recessed & ceiling units

Sizing tables



AR1

Minimum clearance required: 380mm

Dimensions : 595 x 595 x 314 mm

Weight: 18.3kg

Max. airflow: 491 m³/h



AR2

Minimum clearance required: 380mm

Dimensions : 599 x 1202 x 314 mm

Weight: 34.5 kg

Max. airflow: 1021 m³/h



AC2

For ceiling heights of 3m to 6m,

Dimensions : 368 x 1245 x 330 mm

Weight: 21.3kg

Max. airflow: 1204 m³/h

Ceiling height (m)	Area coverage (m ²)	10	15	20	25	30	35	40	45	50	60	70	80	90	100	110	120
2.5	Minimum recommended airflow in m ³ /h	100	150	200	250	300	350	400	450	500	600	700	800	900	1000	1100	1200
2.6		104	156	208	260	312	364	416	468	520	624	728	832	936	1040	1144	1248
2.8		112	168	224	280	336	392	448	504	560	672	784	896	1008	1120	1232	1344
3		120	180	240	300	360	420	480	540	600	720	840	960	1080	1200	1320	1440
4		160	240	320	400	480	560	640	720	800	960	1120	1280	1440	1600	1760	1920
4m to 6m		240	360	480	600	720	840	960	1080	1200							

Key

AR1

AR2

AC2

Combo*

*Combination of several units, depending on the airflow required. It is perfectly possible to combine ceiling and wall units.
It is always possible to divide each zone into several separate areas.

Sizing tables

High density occupancy $<5\text{m}^2 / \text{occupant}$.

→ **5 Volumes/hour.**

Highly frequented places, or places where a large number of people regularly gather.



Wall-mounted or floor-standing units

Sizing tables



AM2
Dimensions : 574 x 360 x 104 mm
Weight: 5.8kg
Max. airflow: 144 m³/h



AW1
Dimensions : 576 x 533 x 270 mm
Weight: 9.4kg
Max. airflow: 436 m³/h



AW2
Dimensions : 576 x 885 x 270 mm
Weight: 16kg
Max. airflow: 742 m³/h

Ceiling height (m)	Area coverage (m ²)	10	15	20	25	30	35	40	45	50	60	70	80	90	100
2.5	Minimum recommended airflow in m ³ /h	125	188	250	313	375	438	500	563	625	750	875	1000	1125	1250
2.6		130	195	260	325	390	455	520	585	650	780	910	1040	1170	1300
2.8		140	210	280	350	420	490	560	630	700	840	980	1120	1260	1400
3		150	225	300	375	450	525	600	675	750	900	1050	1200	1350	1500
4		200	300	400	500	600	700	800	900	1000	1200	1400	1600	1800	2000

Key

AM2

AW1

AW2

Combo*

Recessed & ceiling units

Sizing tables



AR1
Minimum clearance required: 380mm
Dimensions : 595 x 595 x 314 mm
Weight: 18.3kg
Max. airflow: 491 m³/h



AR2
Minimum clearance required: 380mm
Dimensions : 599 x 1202 x 314 mm
Weight: 34.5 kg
Max. airflow: 1021 m³/h



AC2
For ceiling heights of 3m to 6m,
Dimensions : 368 x 1245 x 330 mm
Weight: 21.3kg
Max. airflow: 1204 m³/h

Ceiling height (m)	Area coverage (m ²)	10	15	20	25	30	35	40	45	50	60	70	80	90	100	110	120
2.5	Minimum recommended airflow in m ³ /h	125	188	250	313	375	438	500	563	625	750	875	1000	1125	1250	1375	1500
2.6		130	195	260	325	390	455	520	585	650	780	910	1040	1170	1300	1430	1560
2.8		140	210	280	350	420	490	560	630	700	840	980	1120	1260	1400	1540	1680
3		150	225	300	375	450	525	600	675	750	900	1050	1200	1350	1500	1650	1800
4		200	300	400	500	600	700	800	900	1000	1200	1400	1600	1800	2000	2200	2400
4m to 6m		300	450	600	750	900	1050	1200									

Key

AR1

AR2

AC2

Combo*

*Combination of several units, depending on the airflow required. It is perfectly possible to combine ceiling and wall units.
It is always possible to divide each zone into several separate areas.

Why Fellowes Air Quality makes a difference?

Elegant and discreet design

Integrates perfectly into any space, maintaining aesthetic harmony. The silent mode makes it almost imperceptible.

Smart automated operation

Thanks to our EnviroSmart technology, the system intelligently adapts its operating rate to indoor air quality and occupancy, while controlling energy consumption.

Sized and targeted for professionals

Specifically designed to meet the needs of professionals. The units are supplied with all installation accessories.

Affordable and easy to install

With no additional ductwork, installation and maintenance are simple. The filter is replaced on average once a year.

Purified air for a healthier environment



For more details,
see our technical datasheets:
www.fellowes.com/air



To watch the installation tutorials,
scan the QR code :
Fellowes Air Quality EU - YouTube



Contact us:
salesadmin@fellowes.com
07894 608280