

Fellowes

WORK BETTER™

MobilePro Series™ *Bluetooth*® Keyboard with Carrying Case



PLEASE READ INSTRUCTIONS BEFORE USE.
DO NOT DISCARD.

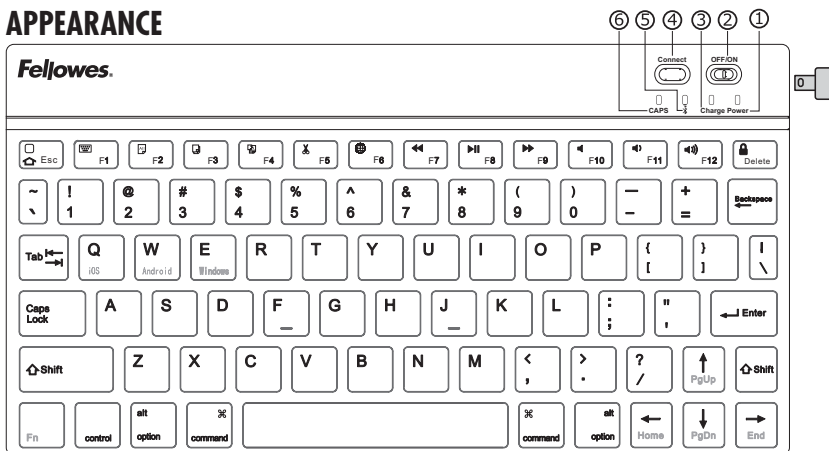
USER MANUAL

Thank you for choosing Fellowes. For optimum performance, please read this instruction guide carefully before operation. Keep for reference.

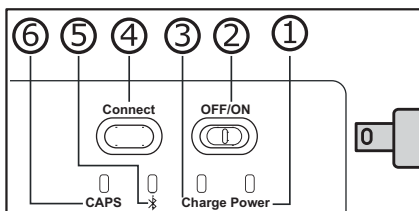
CONTENTS

Bluetooth® Keyboard, Charging Cable and Carrying Case with Wrist Support.

APPEARANCE



- ① Power Light
- ② On/Off Slider
- ③ Charging Light
- ④ Connect Button
- ⑤ Bluetooth® Status Light
- ⑥ Caps Lock Light



Key	Fn	Function Key Icon	Functionality on iOS	Functionality on Android	Functionality on Windows
ESC Key		Esc/Home	Home	Home	Opens Browser Window*
F1		Virtual Keyboard	Show Keyboard	Show Keyboard	No Functionality
F2		Select All	Select All	Select All	Select All*
F3		Copy	Copy	Copy	Copy*
F4		Paste	Paste	Paste	Paste*
F5		Cut	Cut	Cut	Cut*
F6		Change Language	Change Language	Change Language	No Functionality
F7		Back	Play Previous Track	Play Previous Track	Play Previous Track*
F8		Play/Pause	Play/Pause	Play/Pause	Play/Pause*
F9		Next	Play Next Track	Play Next Track	Play Next Track*
F10		Mute	Mute	Mute	Mute*
F11		Volume Down	Volume Down	Volume Down	Volume Down*
F12		Volume Up	Volume Up	Volume Up	Volume Up*
Delete		Lock/Delete	Lock/Delete*	Lock	Delete

*Press and hold down "FN" key and other function key simultaneously

GETTING STARTED

1. BUTTONS

On/Off Slider Switch: Slide switch ON or OFF to turn the device ON or OFF

Connect Button: After the On/Off Slider Switch is in the ON position, press the Connect Button.

The keyboard is now ready to connect to your device.

2. STATUS LIGHTS

Caps Lock Light: Light will glow blue when Caps Lock is activated.

Bluetooth® Status Light: Press the Connect Button. The Bluetooth® Status Light will blink blue until the keyboard connects with your device. After connecting with your device the blue light will turn off.

Charging Light: Light will glow red while the keyboard is charging. When the keyboard is fully charged the light will turn off.

Power Light: Slide the On/Off Slider Switch to ON. The blue status light will illuminate for four seconds and turn off to save power. Your keyboard is still on.

SPECIFICATION

1. Working voltage: 3.0-4.2 V
2. Working current: <2.5 mA
3. Standby current: <0.3 mA
4. Charging current: ≥ 100 mA
5. Operating temperature: -10 to 55°C
6. Operating distance: Up to 10 meters
7. Charging time: < 4 hours
8. Lithium battery capacity: 280 mA
9. Battery working time: 90 hours
10. Battery life: 3 years
11. Battery size: 3.8 x 20 x 35mm
12. Keystroke life: 3 million strokes
13. Standby time: 90 days

PAIRING INSTRUCTIONS

PAIRING WITH iOS®

- Step 1:** On the keyboard, slide the power button on. The blue status light will illuminate for 4 seconds and then turn off to save power. Your keyboard is still on.
- Step 2:** On the iOS device, select: Settings – General – *Bluetooth®* – On.
- Step 3:** Press the connect button on the keyboard (the *Bluetooth®* indicator light will be blinking blue).
- Step 4:** The iOS device will display “Fellowes keyboard” as an available device.
- Step 5:** Select “Fellowes keyboard” on the iOS device. The iOS device will display a code.
- Step 6:** Type the code on the keyboard and press enter. The keyboard will now be paired to the iOS device.
- Step 7:** Switch the keyboard to iOS mode by holding the “Fn” key down and hitting the “Q” key.

PAIRING WITH ANDROID™

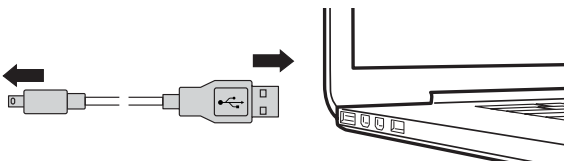
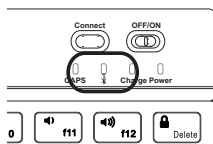
- Step 1:** On the keyboard, slide the power button on. The blue status light will illuminate for 4 seconds and then turn off to save power. Your keyboard is still on.
- Step 2:** On the device, select Settings -> *Bluetooth®* -> Turn *Bluetooth®* on, and select “scan for devices”.
- Step 3:** Press the connect button on the keyboard (the *Bluetooth®* indicator light will blink blue).
- Step 4:** The Android device will display “Fellowes keyboard” as an available device.
- Step 5:** Select “Fellowes keyboard” on the Android device. The Android device will display a code.
- Step 6:** Type the code on the keyboard and press enter. The keyboard will now be paired to the Android device.
- Step 7:** Switch the keyboard to Android mode by holding the “Fn” key down and hitting the “W” key.

PAIRING WITH WINDOWS®

- Step 1:** On the keyboard, slide the power button on. The blue status light will illuminate for 4 seconds and then turn off to save power. Your keyboard is still on.
- Step 2:** On the device, go to Settings -> PC + Devices -> *Bluetooth®* -> Turn *Bluetooth®* on, and select “search for a device”.
- Step 3:** Press the connect button on the keyboard (the *Bluetooth®* indicator light will blink blue).
- Step 4:** The Windows device will display “Fellowes keyboard” as an available device.
- Step 5:** Select “Fellowes keyboard” on the Windows device. The Windows device will display a code.
- Step 6:** Type the code on the keyboard and press enter. The keyboard will now be paired to the Windows device.
- Step 7:** Switch the keyboard to Windows mode by holding the “Fn” key down and hitting the “E” key.

CHARGING INSTRUCTIONS

Charge	Glowing Red	Battery needs charging/charging in progress
	Turns Off	Battery is fully charged



1. Plug the Micro-USB charging cable into the keyboard.
2. Plug the USB port into a computer or power adapter, if you have one - not included.
3. Charge for 4 hours or until the charge indicator light turns off.

POWER SAVE MODE

The keyboard will enter sleep mode after being idle for 15 minutes. To activate it from sleep mode, press any key and wait 3 seconds.

GENERAL PRECAUTIONS

- This keyboard is not a toy. Keep away from children. Read and follow all instructions and warnings before use.
- Inspect the keyboard and charging cable before use. If any parts are damaged, contact Fellowes Technical Support before resuming use.
- Do not open, disassemble, modify, drop, crush, puncture, incinerate, or shred the Fellowes *Bluetooth*® keyboard.
- The keyboard is not serviceable. Do not attempt to open, repair, or modify.
- To prevent a short circuit or other potential hazards, do not insert foreign metal objects into the keyboard or its ports.
- Keep keyboard away from moisture and do not use with wet hands. Moisture in or on the keyboard may lead to electrical shock. If exposed to moisture during use, turn off and unplug the charging cable immediately. Contact Fellowes Technical Support before resuming use.
- The keyboard contains a lithium-ion battery. Keep away from heat sources and open flames.
- It is normal for the keyboard to become warm during operation. To prevent overheating, keep the area around the keyboard ventilated. Do not place anything on or around the keyboard during operation. Do not operate the keyboard near a heat source or in direct sunlight. Your keyboard should be used in temperatures between 50-80°F (10-27°C).
- If the keyboard begins to emit a strong odor, becomes hot to the touch, swells or expands, turn it off and unplug the keyboard immediately and contact Fellowes Technical Support.
- If the battery inside the keyboard leaks for any reason, turn off and unplug the keyboard immediately. Do not allow the contents of the battery to contact your skin or eyes. In the event of contact, wash the affected area with large amounts of water and seek medical attention immediately.
- Do not leave the keyboard to charge for more than 4 hours.

CARE AND STORAGE

- Do not store your keyboard in areas of high temperatures (such as in your car) or in high humidity.
- Do not place heavy objects on top of the keyboard.
- Keep the keyboard away from oil, chemicals, and liquids.
- Clean the keyboard with a damp clean cloth.

DISPOSAL

- Do not burn or dispose of your keyboard in a fire or incinerator.
- *Do not throw your keyboard away in the trash.* The keyboard contains a lithium ion battery. Contact your local electronics recycler to see who near to you can recycle the keyboard for you.
- *Please be responsible. Many governments require that you recycle batteries.*

TROUBLESHOOT

A. UNABLE TO CONNECT

1. Make sure the On/Off Slider Switch is ON.
2. Verify that the keyboard is within the operating distance (10 meters/32.8 feet).
3. Make sure that the battery for the keyboard and the battery in your mobile device are both charged.
4. Make sure *Bluetooth*® is activated on your iOS/Android/Windows device.
5. Press the Connect button on the keyboard.
6. Confirm that the keyboard has connected to your iOS/Android/Windows device.
7. Make sure you selected the correct operating system for your device on the keyboard.

B. UNABLE TO CHARGE KEYBOARD

1. Make sure the USB power cable is properly connected to the keyboard and to the USB/power source.

NEED HELP?

Let our experts help you with a solution. For Technical Support call 800-553-1155 or e-mail feltech@fellowes.com. For Customer Service call 800-945-4545.

UNITED STATES FEDERAL COMMUNICATIONS COMMISSION (FCC) NOTICE:

This device complies with Part 15 of the FCC Rules. Operation is subject to the following two conditions: (1) this device may not cause harmful interference, and (2) this device must accept any interference received, including interference that may cause undesired operation. This equipment has been tested and found to comply with the limits of a Class B digital device, pursuant to Part 15 of the FCC Rules. These limits are designed to provide reasonable protection against harmful interference in a residential installation. This equipment generates, uses and can radiate radio frequency energy and, if not installed and used in accordance with the instructions, may cause harmful interference to radio communications. However, there is no guarantee that interference will not occur in particular installations, which can be determined by turning the equipment off and on. The user is encouraged to try to correct the interference by one or more of the following measures:

1. Reorient / Relocate the receiving antenna.
2. Increase the separation between the equipment and receiver.
3. Connect the equipment into an outlet on a circuit different from the one the receiver is connected to.
4. Consult the dealer or an experienced radio / TV technician for help.

CAUTION:

Changes or modifications not expressly approved by the manufacturer responsible for compliance could void the user's authority to operate the equipment.

FELLOWES *Bluetooth*[®] KEYBOARD WITH CARRYING CASE 1-YEAR LIMITED WARRANTY

Fellowes, Inc. (the "Company") warrants this product to be free from defects in material and workmanship appearing within one (1) year from the date of the original purchase of the product. If such a defect appears during the warranty period, the Company will (at its sole option) either repair or replace the defective product with no charge for service or parts, or refund the purchase price, provided that the unit is sent to the Company at the customer's expense to the address on the back of the manual.

This warranty applies only to the initial retail purchaser and does not cover claims resulting from misuse, failure to follow instructions on installation and use, neglect, use of unauthorized attachments, commercial use, use on a current or voltage other than specified on the product, or unauthorized service during the warranty period on conditions otherwise covered by the warranty.

THE DURATION OF ANY IMPLIED WARRANTIES, INCLUDING BUT NOT LIMITED TO ANY IMPLIED WARRANTIES OF MERCHANTABILITY OR FITNESS FOR A PARTICULAR PURPOSE, IS EXPRESSLY LIMITED TO THE DURATION OF THIS LIMITED WARRANTY.

UNLESS REQUIRED BY APPLICABLE LAW, THE CUSTOMER'S EXCLUSIVE REMEDY FOR BREACH OF THIS WARRANTY OR ANY IMPLIED WARRANTY OR OF ANY OTHER OBLIGATION ARISING BY OPERATION OF LAW OR OTHERWISE SHALL BE LIMITED AS SPECIFIED HEREIN TO REPAIR, REPLACEMENT OR A REFUND OF THE PURCHASE PRICE, AT THE COMPANY'S SOLE OPTION.

UNDER NO CIRCUMSTANCE WILL THE COMPANY, ITS AFFILIATES, SUBSIDIARIES, RELATED ENTITIES, RESELLERS OR THEIR RESPECTIVE OFFICERS, DIRECTORS OR EMPLOYEES OR THOSE PERSONS FOR WHOM THEY ARE BY LAW RESPONSIBLE, BE LIABLE FOR CONSEQUENTIAL OR INCIDENTAL DAMAGES SUSTAINED IN CONNECTION WITH THE PRODUCT. THE COMPANY AND THESE OTHER PARTIES DO NOT ASSUME OR AUTHORIZE ANY REPRESENTATIVE OR OTHER PERSON TO ASSUME FOR ANY OF THEM ANY OBLIGATION OR LIABILITY OTHER THAN AS IS EXPRESSLY SET FORTH HEREIN.

The duration, terms and conditions of this warranty are valid worldwide, except where different limitations, restrictions or conditions may be required by local law.

Apple[®], iPad[®] and iOS[®] are trademarks of Apple, Inc.

Android[™] is a trademark of Google, Inc.

Windows[®] is a trademark of Microsoft, Inc.

The *Bluetooth*[®] word mark & logo are registered trademarks of Bluetooth SIG, Inc. Used under license.

ADDITIONAL WARRANTY INFORMATION FOR AUSTRALIAN CONSUMERS

Our goods come with guarantees that cannot be excluded under the Australian Consumer Law. You are entitled to a replacement or refund for a major failure and for compensation for any other reasonably foreseeable loss or damage. You are also entitled to have the goods repaired or replaced if the goods fail to be of acceptable quality and the failure does not amount to a major failure. Furthermore, any warranty for defects under the scope of the Regulations must state the:

- Warranty period;
- Procedure for claiming and who bears the cost of claiming the warranty;
- Name, business address, telephone number and email address (if any) of the person who gives the warranty; and
- Benefits to the consumer given by the warranty are in addition to other rights and remedies of the consumer under law.



CUSTOMER SERVICE & SUPPORT

www.fellowes.com

United States: 1-800-945-4545

Canada: 1-800-665-4339

Mexico: 001-800-514-9057

Australia: +61-1800-3311 77

Declaration of Conformity

Fellowes (Australia) Pty Ltd

79-81 South Centre Road, Melbourne Airport Business Park, Tullamarine, Victoria 3045, Australia declares that the Fellowes MobilePro Series Bluetooth Keyboard conforms with the requirements of the Restriction of Hazardous Substances Directive (2011/65/EC), the Low Voltage Directive (2006/95/EC), the Electromagnetic Compatibility Directive (2004/108/EC), the WEEE Directive (2012/19/EU) and below harmonized European EN Standards.

Safety	EN 60950-1 (Second Edition)
FCC	FCC Part 15 Rules
Radio	EN 300 328
RF	EN 62479
EMC	EN 301 489-1 and EN 301 489-17

Year Affixed: 2015

Itasca, Illinois, USA
July 1, 2015

John Fellowes

W.E.E.E. - This product is classified as electrical and electronic equipment. Should the time come for you to dispose of this product, please ensure that you do so in accordance with European Waste of Electrical and Electronic Equipment (WEEE) Directive and in compliance with local laws that relate to this directive.

For more information on the WEEE Directive please visit www.fellowesinternational.com/WEEE.